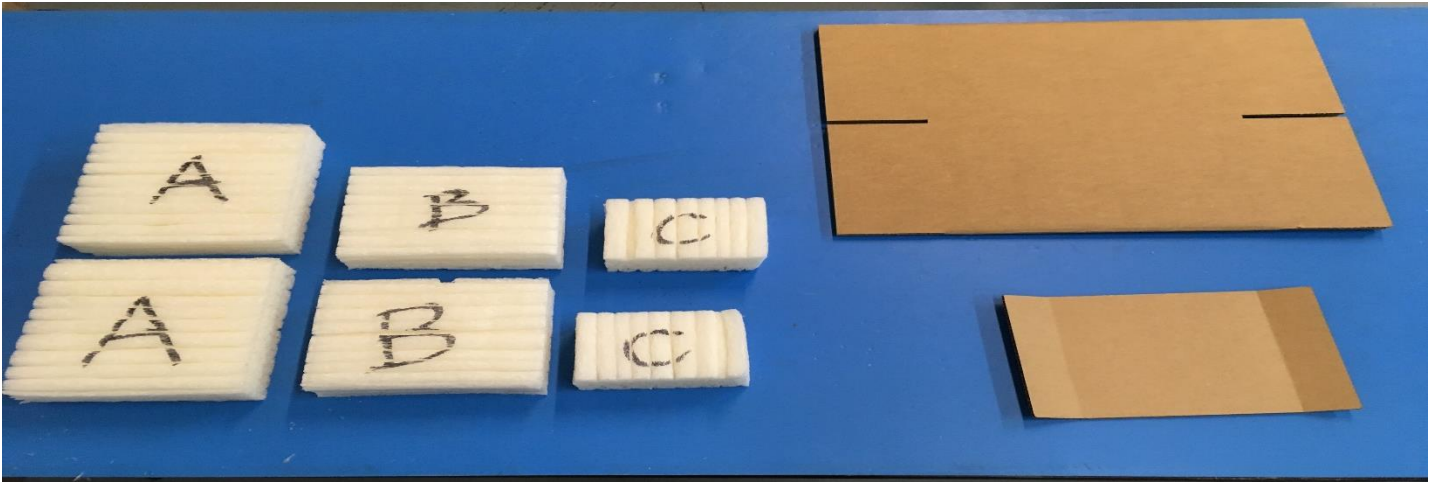


Biodegradable Flight Box Assembly Instructions

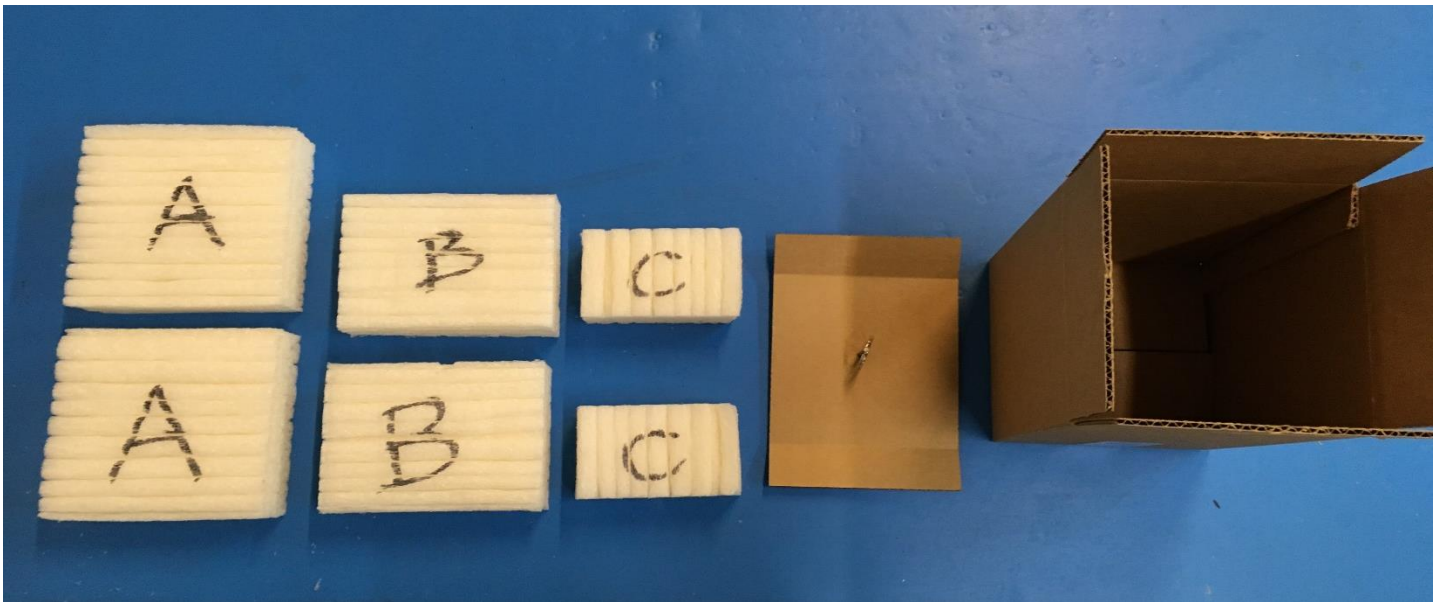
J.H. ACQUISITION, LLC D.B.A. EN-SCI

Biodegradable Flight Box Assembly Instructions

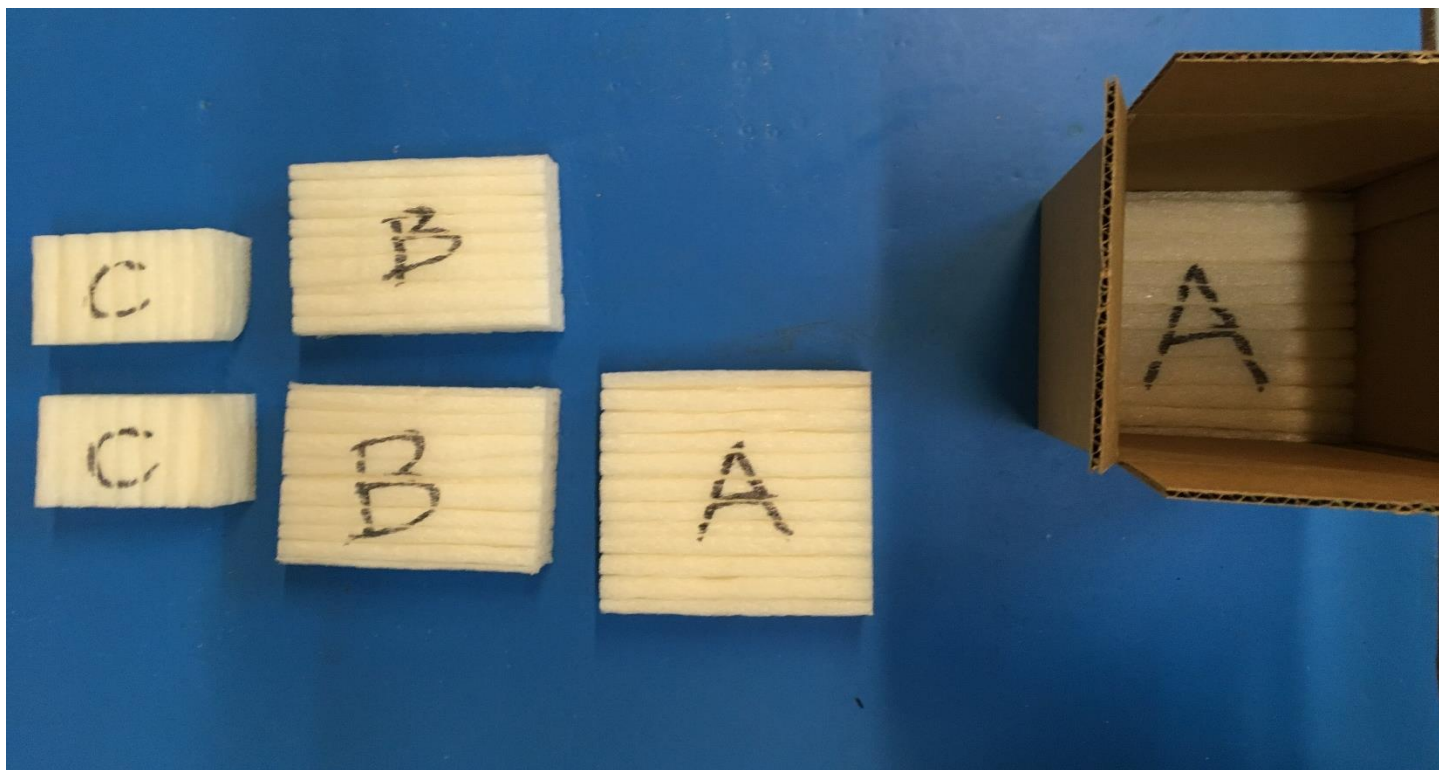
- 1) Layout the components of the flight box as pictured in exhibit 1A.



- 2) Fold cardboard box and tape the bottom of the box securely as pictured in exhibit 2A.



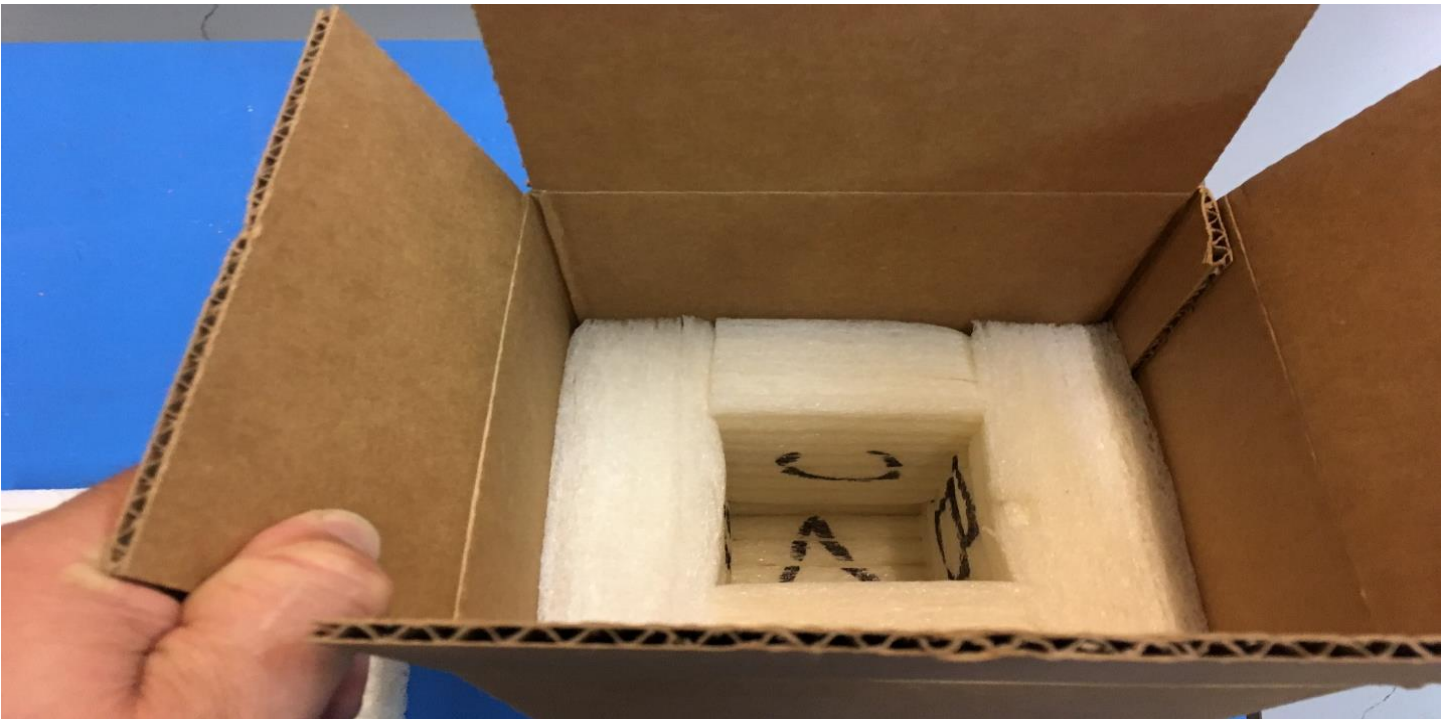
- 3) Place either biofoam piece labeled 'A' into the bottom of the cardboard box as pictured in 3A.



- 4) Place both 'B' labeled biofoam pieces on both sides of the cardboard box opposite each other as pictured in 4A.
(keep orientation the same)



- 5) Place both 'C' labeled biofoam pieces on both sides of the cardboard box opposite each other as pictured in 5A.



- 6) Place the EN-SCI ECC Ozonesonde in an orientation so that the motor and the pump block face the letter 'B' walls as pictured in 6A.

NOTE: Punch a small hole in the side wall where the 'inlet tube' is facing out. In this case it will be placed in the bio foam piece labeled 'C' which is oriented on the bottom side of the photo. Thread the 'inlet tube' through the cardboard wall and the 'C' insulation piece and carefully attach the 'inlet tube' into the Teflon pump block opening with the sandpaper provided.



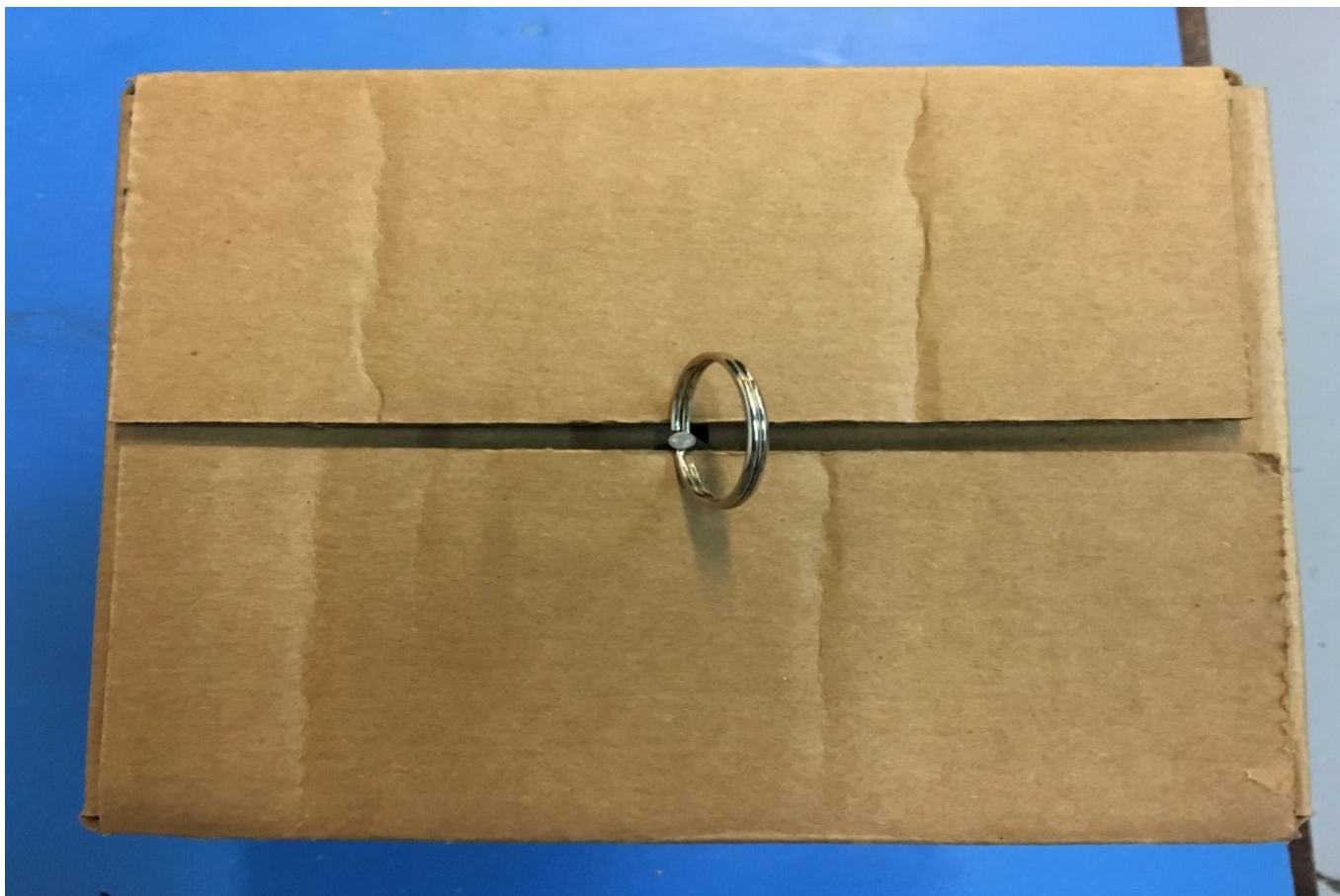
- 7) Place the final 'A' labeled biofoam piece on top of the ozonesonde as pictured in 7A.
MAKE SURE THAT THE 'GROOVES' ARE PERPENDICULAR TO THE ORIENTATION OF THE PUMP BLOCK!



- 8) Place the clevis pin cardboard piece on top of the biofoam 'A' and close the 'right & left' box lids first. Make sure the steel split ring is parallel to the right & left box top closing. Then holding down both the right & left box lids, turn the steel ring 90 degrees so that the steel ring is parallel to the top & bottom remaining box lids. Then fold down the top & bottom lids and then turn the steel ring back 90 degrees to 'hold down' the lids in place. The flight crew must then tape the box as in any standard procedure when preparing for any standard ozonesonde flight, i.e. attaching a radiosonde, taping the outside securely, labeling the ozonesonde properly, tying the ozonesonde to the unwinder, parachute and balloon, etc. As pictured in 8A. Please refer to the UAH manual.



- 9) Completed Biofoam flight box ready for taping and attaching radiosondes and other instruments if necessary.
As pictured in 9A.



Below is an excerpt from Patrick Cullis at NOAA who has flown the biodegradable flight box several times.

“I have thought about it even more, maybe keep the spacer cardboard in the bottom and just put a split ring on the top box panel facing the side that the radiosonde will go. If you are doing a single radiosonde, the anchor point needs shifted anyway. We've been flying two radiosondes for another project so our anchor point is closer to center right now, but putting it directly in to the box top seems like an elegant solution.” -- Patrick Cullis – NOAA – Boulder



